

GRPR Antibody (Cytoplasmic Domain)
Rabbit Polyclonal Antibody
Catalog # ALS10179**Specification**

GRPR Antibody (Cytoplasmic Domain) - Product Information

Application	IHC-P, ICC
Primary Accession	P30550
Reactivity	Human, Mouse, Hamster, Monkey, Pig, Bovine, Dog
Host	Rabbit
Clonality	Polyclonal
Calculated MW	43kDa KDa
Dilution	IHC-P~~N/A ICC~~N/A

GRPR Antibody (Cytoplasmic Domain) - Additional Information**Gene ID** 2925**Other Names**

Gastrin-releasing peptide receptor, GRP-R, GRP-preferring bombesin receptor, GRPR

Target/Specificity

Human GRPR. BLAST analysis of the peptide immunogen showed no homology with other human proteins, except ADAM28 (41%).

Reconstitution & Storage

Long term: -70°C; Short term: +4°C

Precautions

GRPR Antibody (Cytoplasmic Domain) is for research use only and not for use in diagnostic or therapeutic procedures.

GRPR Antibody (Cytoplasmic Domain) - Protein Information**Name** GRPR**Function**

Receptor for gastrin-releasing peptide (GRP) (PubMed:1655761). Signals via association with G proteins that activate a phosphatidylinositol-calcium second messenger system, resulting in Akt phosphorylation. Contributes to the regulation of food intake. Contributes to the perception of prurient stimuli and transmission of itch signals in the spinal cord that promote scratching behavior, but does not play a role in the perception of pain. Contributes primarily to nonhistaminergic itch sensation. In one study, shown to act in the amygdala as part of an inhibitory network which inhibits memory specifically related to learned fear (By similarity). In another study, shown to contribute to disinhibition of glutamatergic cells in the auditory cortex via

signaling on vasoactive intestinal peptide- expressing cells which leads to enhanced auditory fear memories (By similarity). Contributes to the induction of sighing through signaling in the pre-Botzinger complex, a cluster of several thousand neurons in the ventrolateral medulla responsible for inspiration during respiratory activity (By similarity).

Cellular Location

Cell membrane; Multi-pass membrane protein

Tissue Location

Highly expressed in pancreas (PubMed:11245983). Also expressed in stomach, adrenal cortex and brain (PubMed:11245983) In brain, expressed in cells throughout the cortex (PubMed:34610277)

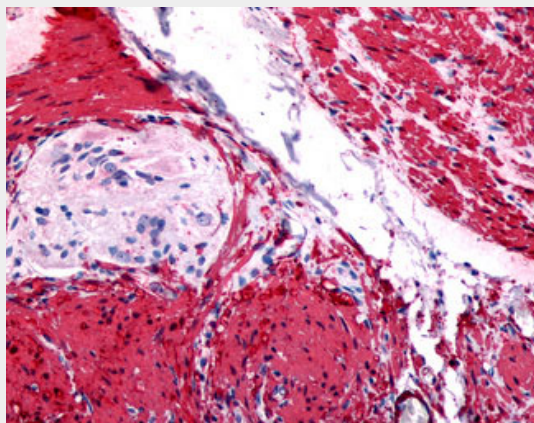
Volume

50 µl

GRPR Antibody (Cytoplasmic Domain) - Protocols

Provided below are standard protocols that you may find useful for product applications.

- [Western Blot](#)
- [Blocking Peptides](#)
- [Dot Blot](#)
- [Immunohistochemistry](#)
- [Immunofluorescence](#)
- [Immunoprecipitation](#)
- [Flow Cytometry](#)
- [Cell Culture](#)

GRPR Antibody (Cytoplasmic Domain) - Images

Anti-GRPR antibody ALS10179 IHC of human colon.

GRPR Antibody (Cytoplasmic Domain) - Background

Receptor for gastrin releasing peptide (GRP). This receptor mediates its action by association with G proteins that activate a phosphatidylinositol-calcium second messenger system.

GRPR Antibody (Cytoplasmic Domain) - References

Corjay M.H., et al. J. Biol. Chem. 266:18771-18779(1991).
Xiao D., et al. Gene 264:95-103(2001).

Ota T.,et al.Nat. Genet. 36:40-45(2004).

Mural R.J.,et al.Submitted (JUL-2005) to the EMBL/GenBank/DDBJ databases.